

# Journal of Commerce

A Southam construction newspaper serving B.C. & Alberta

## Special focus project report in pull-out section inside



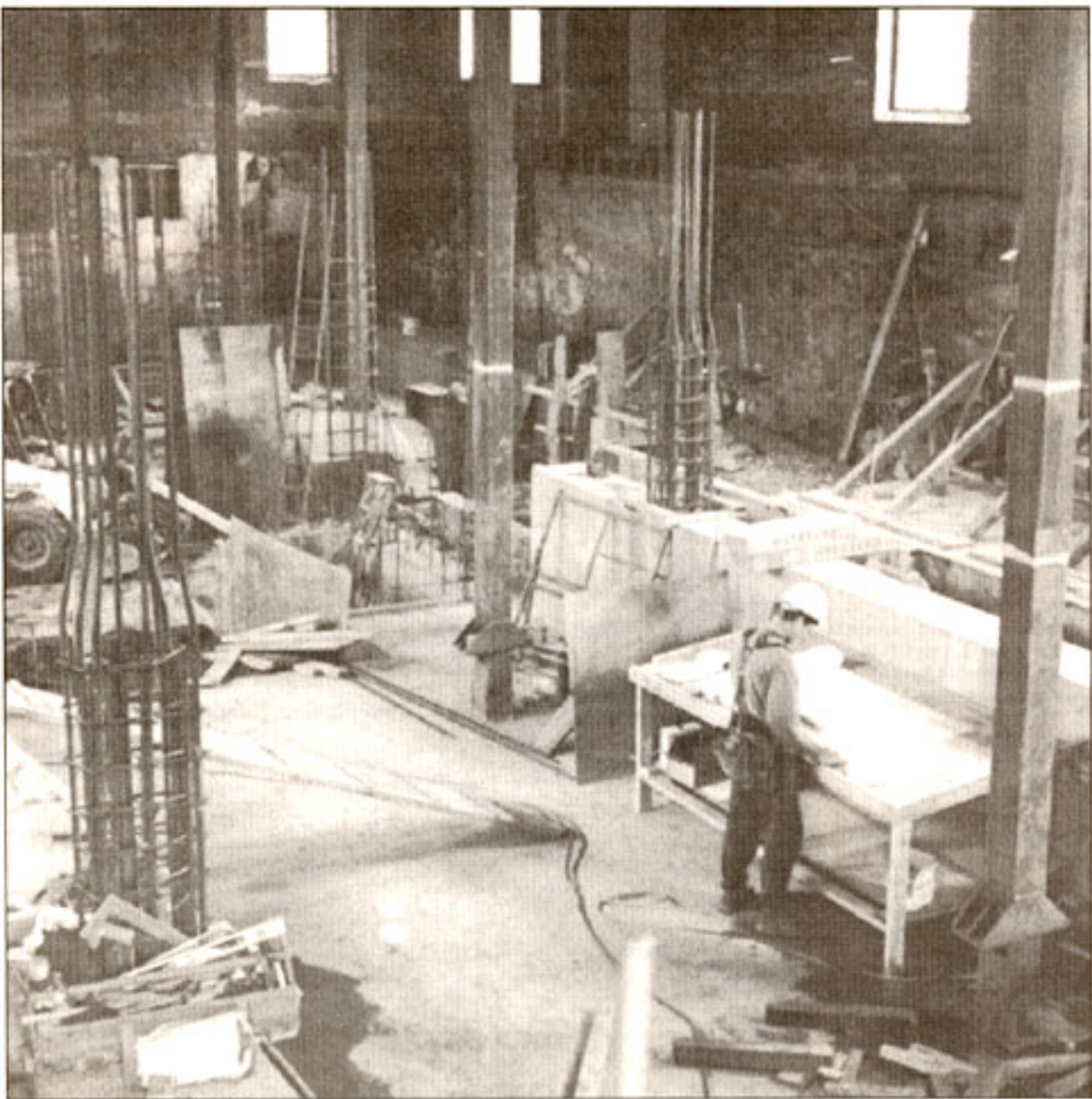
Virtually another concrete building, including these stairs being pumped into place, is being inserted inside the masonry walls of St. Ann's Academy in Victoria. This is just one of many construction and design challenges being successfully faced on the project which will see the culturally and historically significant former convent converted to modern office use without the loss of its heritage characteristics. Unique financing and a lot of public support were required to push the ambitious undertaking to this stage but indications are the effort will be more than worthwhile. See the complete construction story starting at page fs1 inside. This edition's pull-out section also contains the *Journal's* annual update of construction Support Technology. — John Taylor photo.

FEATURE SECTION



*St. Ann's  
Academy*

**Modern offices forming  
inside heritage exterior  
of \$15.6 million project**



A backhoe (*opposite page*) provides some muscle for an interior excavation that was vital to building a new foundation without damaging the interior fabric; worker (*at top*) is flanked by new steel posts as he checks plans; exterior photo (*above*) of the academy during construction earlier this year.



## **CAMPBELL CONSTRUCTION LTD.**

GENERAL CONTRACTORS • BUILDING CONSULTANTS  
CONSTRUCTION MANAGERS  
580 Ardshire Road, Victoria, B.C. V8Z 1C7  
Phone: 475-1300 Fax: 475-0303

Construction Managers for  
***St. Ann's Academy  
Restoration Project***

We are proud to be a member of the team that  
is restoring this vital part of  
Victoria's heritage.